

U.S. Army Public Health Center

Army Influenza Activity Report

Week ending 27 March 2021 (Week 12)

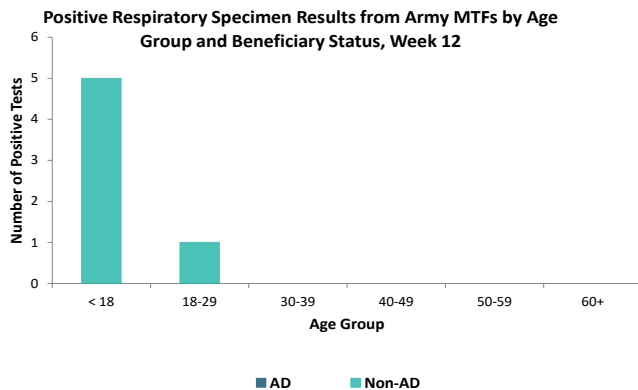
SUMMARY

Influenza activity remains low in the Army population. Two positive influenza B specimens and one positive influenza A specimen were reported during surveillance week 12. No hospitalizations were reported in week 12; the season total thus far is four compared to 247 influenza-associated hospitalizations reported as of this time last season. Eighty-three percent of specimens that tested positive for select respiratory illnesses were collected from individuals younger than 18 during surveillance week 12. Nationwide, influenza activity is low with 0.1% of specimens tested by clinical laboratories being positive for influenza.

GEOGRAPHIC SPREAD

Data on the geographical spread of influenza is unavailable this season due to the COVID-19 pandemic. For information from previous seasons and additional information about nationwide influenza surveillance, please visit the Centers for Disease Control and Prevention's website by clicking [here](#).

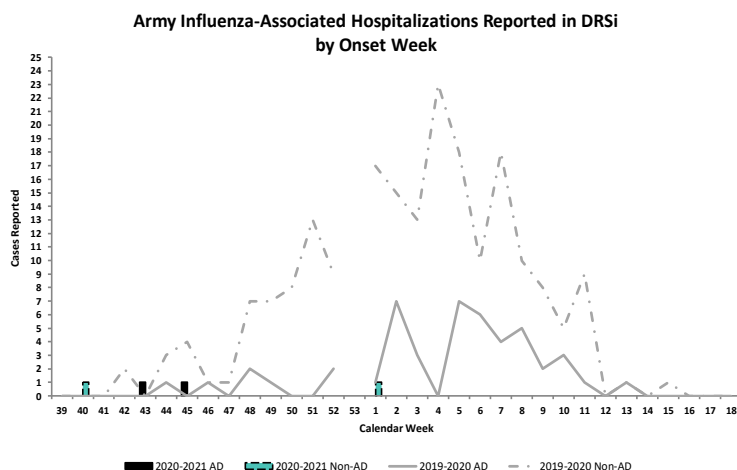
DEMOGRAPHICS



AD: No positive respiratory specimens were collected from active duty (AD) Service members during week 12.

Non-AD: Six positive respiratory specimens were collected from non-AD individuals during week 12; 83% of specimens were collected from individuals under 18 years of age.

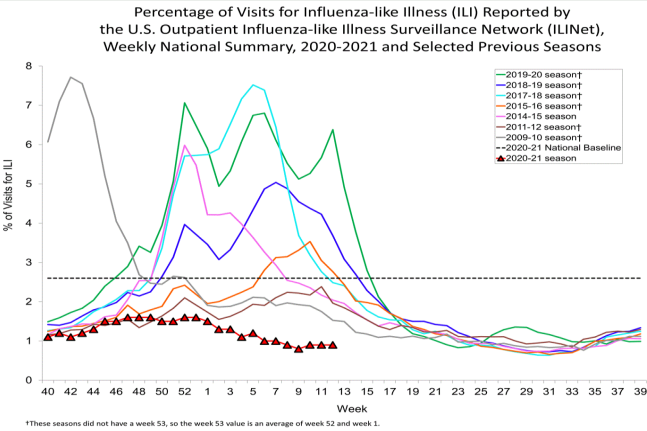
INFLUENZA-ASSOCIATED HOSPITALIZATIONS



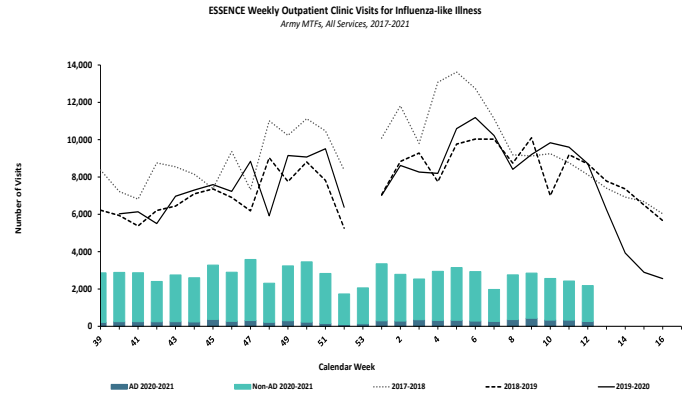
No influenza-associated hospitalizations with onset dates in week 12 were reported to the Disease Reporting System internet (DRSi); four hospitalizations have been reported for the entire season thus far. During the 2019-2020 season, no hospitalizations were reported in week 12 (with 247 hospitalizations reported from start of the season through week 12).

*DRSi does not capture cases older than 65 years old for influenza-associated hospitalizations.

ILI ACTIVITY - UNITED STATES

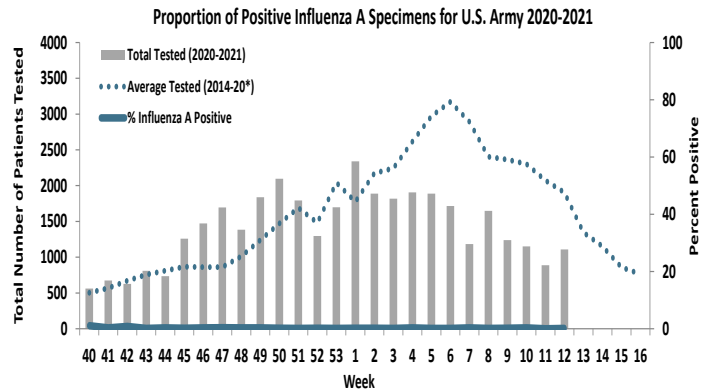
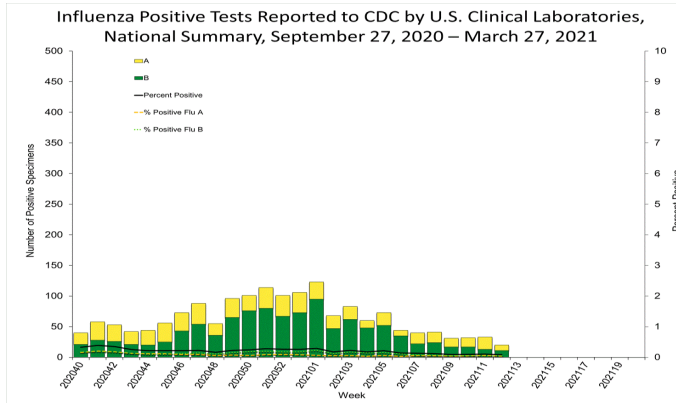


ILI ACTIVITY - ARMY



Nationwide in week 12, incident ILI activity was 0.9%; this is below the national baseline of 2.6%. At Army medical treatment facilities, incident ILI activity decreased by 9.9% from week 11 to week 12. The majority of ILI encounters (88%) occurred among non-AD patients in week 12.

LABORATORY RESPIRATORY SPECIMEN TESTING



Nationwide during week 12, a total of 22,973 specimens were tested for influenza by select clinical laboratories and submitted to the CDC; 20 (0.1%) were positive. Influenza B accounted for 55% (n=11) of the total positive specimens. In the Army population, one (0.1%) of the 1,108 specimens tested for influenza A were positive in week 12.

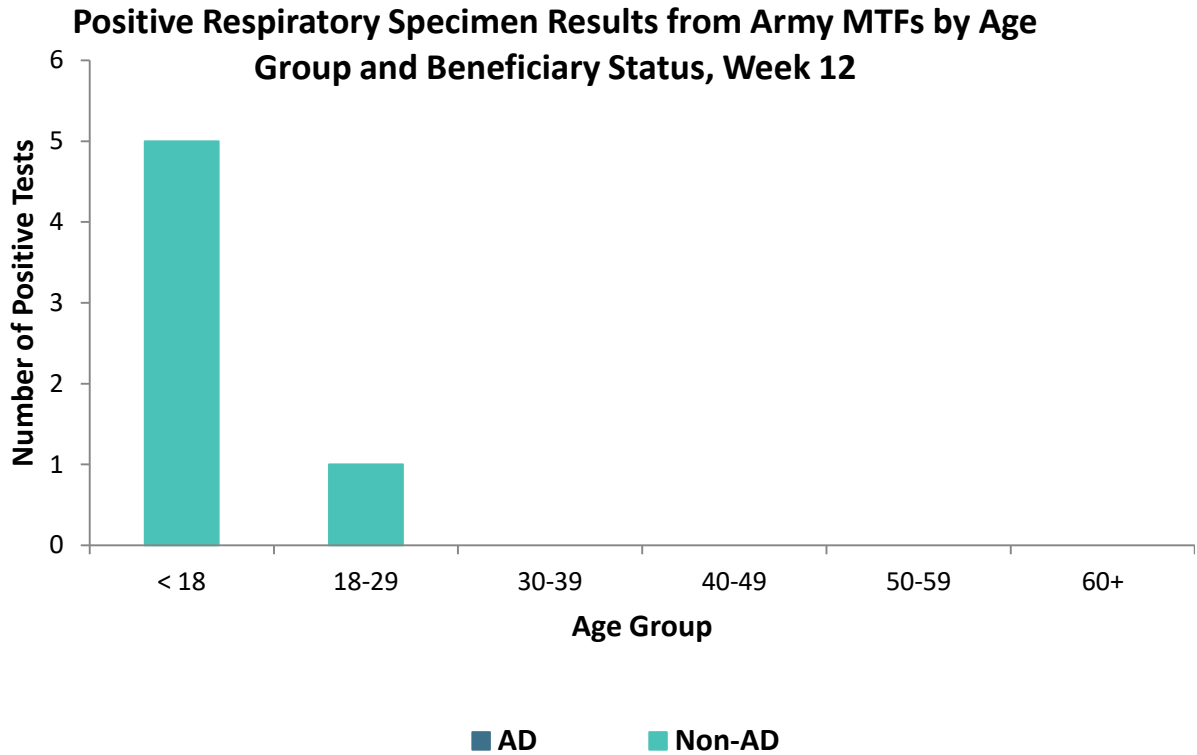
		Week 9	Week 10	Week 11	Week 12	Season Total
Army MTF Laboratory Results, 2020-21	Influenza A	2	4	0	1	85
	Influenza B	3	4	2	2	96
	Adenovirus	4	3	1	1	71
	Enterovirus	3	1	2	1	258
	Parainfluenza	1	0	0	0	10
	RSV	1	1	0	1	43
	Negative	3,244	3,135	2,471	2,952	88,441
	Total	3,258	3,148	2,476	2,958	89,004

Of the 2,958 specimens tested in week 12, less than 1% (n=6) were positive for any type of respiratory illness. Influenza B accounted for 33.3% (n=2) and influenza A, adenovirus, enterovirus, and respiratory syncytial virus each accounted for 16.7% (n=1) of the positive specimens.

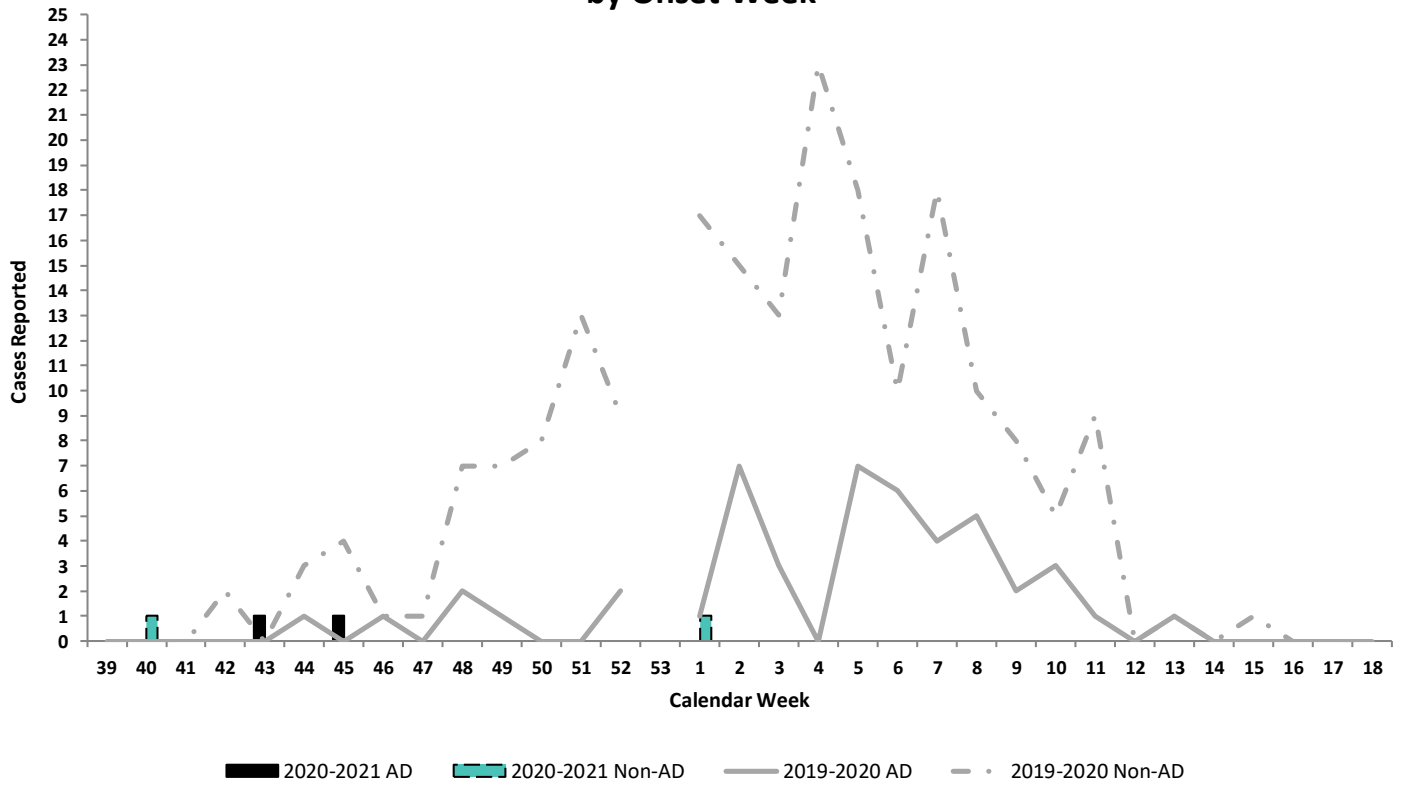
Additionally, the reported number of specimens tested increased by 19.5% since week 11 (n=2,476).

Locations providing week 12 laboratory data as of 31 March 2021: Ft Belvoir, Ft Benning, Ft Bliss, Ft Bragg, Ft Campbell, Ft Carson, Ft Drum, Ft Eustis, Ft Gordon, Ft Hood, Ft Irwin, Ft Jackson, Ft Knox, Ft Leavenworth, Ft Lee, Ft Leonard Wood, Ft Lewis, Ft Polk, Ft Riley, Ft Rucker, Ft Sam Houston, Ft Stewart, Ft Wainwright, Korea, Landstuhl Regional Medical Center, and Tripler Army Medical Center.

U.S. Army Public Health Center
**Army Influenza
Activity Report**
Week ending 27 March 2021 (Week 12)



Army Influenza-Associated Hospitalizations Reported in DRSi by Onset Week

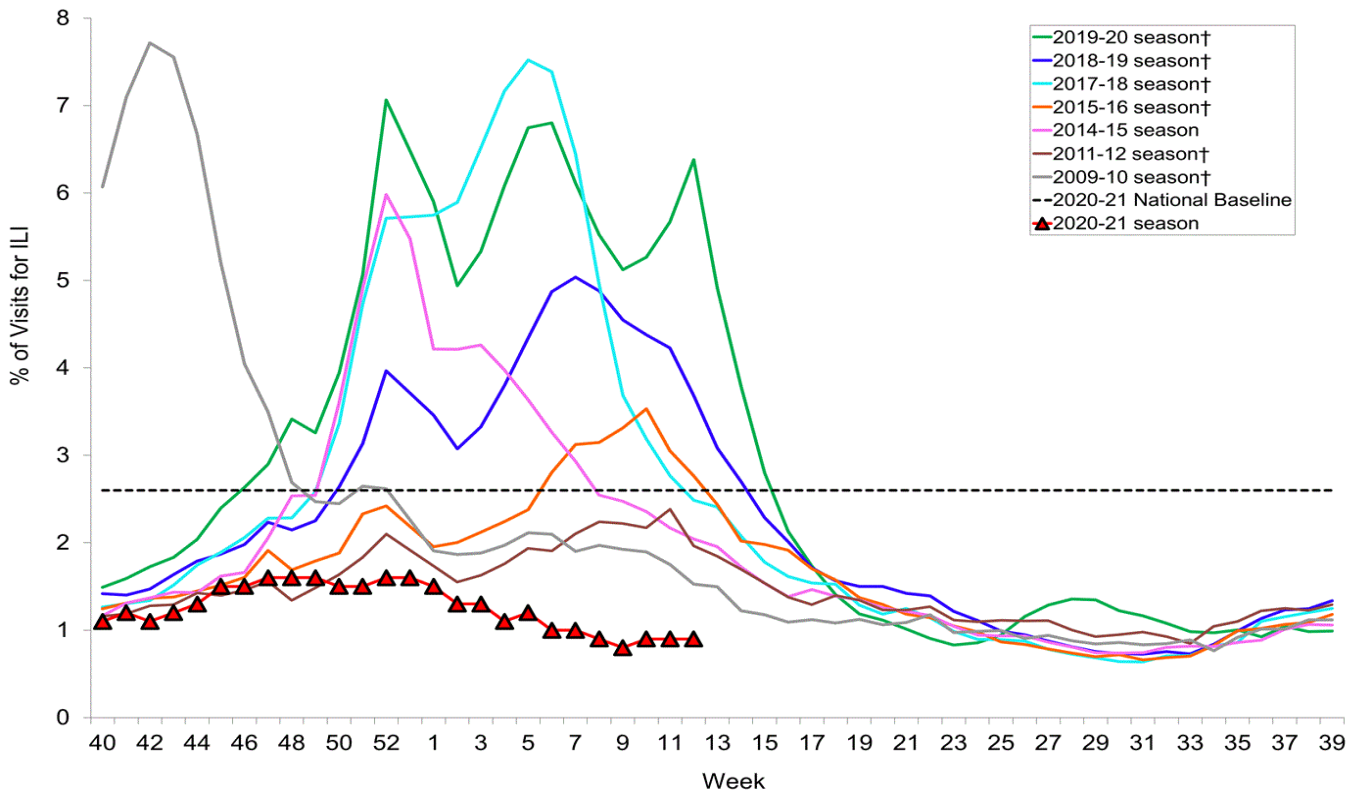


U.S. Army Public Health Center

Army Influenza Activity Report

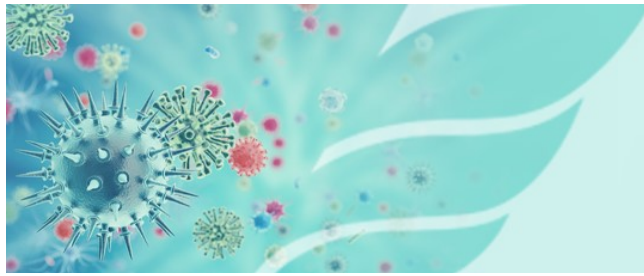
Week ending 27 March 2021 (Week 12)

Percentage of Visits for Influenza-like Illness (ILI) Reported by the U.S. Outpatient Influenza-like Illness Surveillance Network (ILINet), Weekly National Summary, 2020-2021 and Selected Previous Seasons



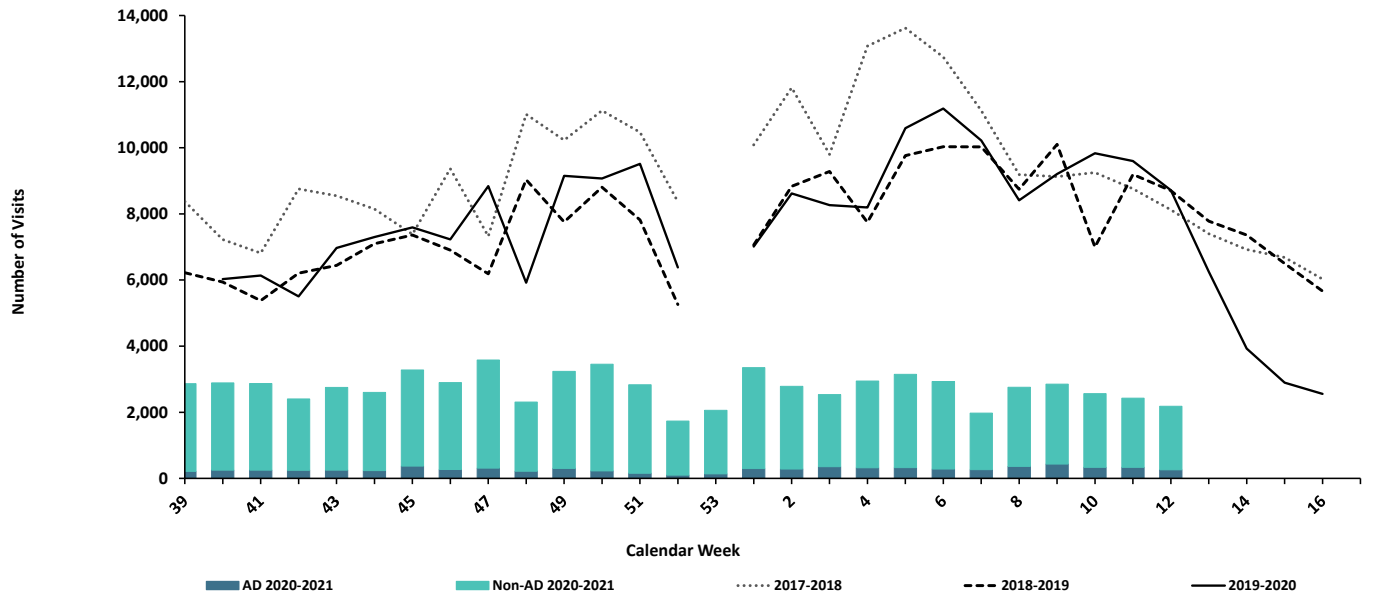
†These seasons did not have a week 53, so the week 53 value is an average of week 52 and week 1.

Source: Centers for Disease Control and Prevention (CDC)

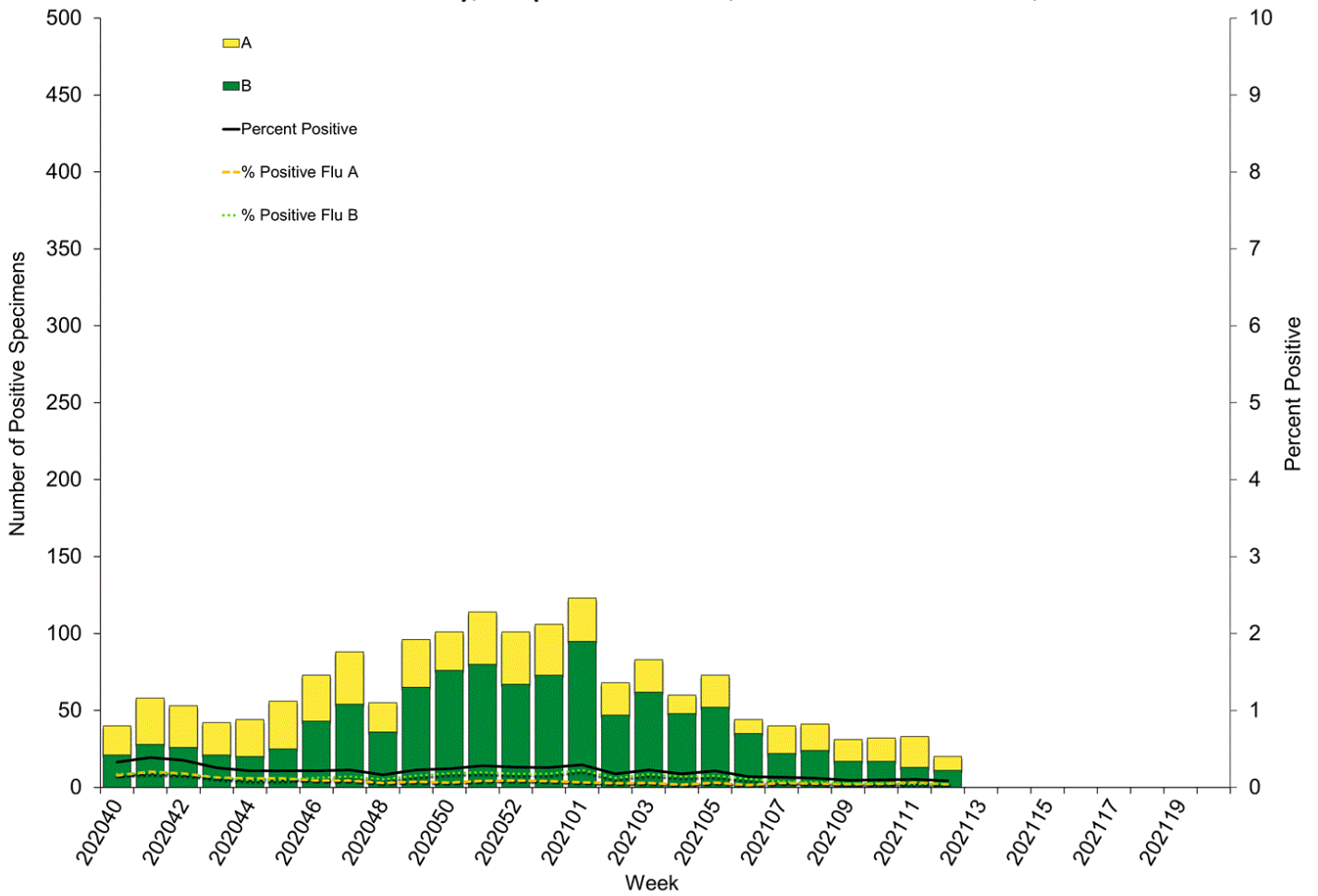


U.S. Army Public Health Center
**Army Influenza
Activity Report**
Week ending 27 March 2021 (Week 12)

ESSENCE Weekly Outpatient Clinic Visits for Influenza-like Illness
Army MTFs, All Services, 2017-2021



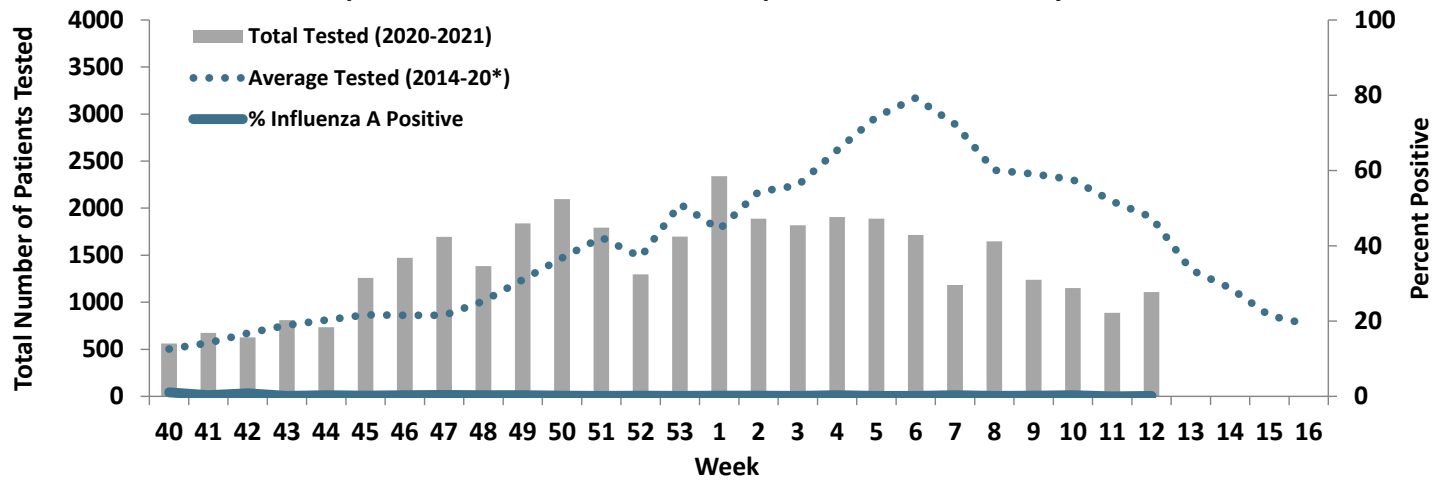
Influenza Positive Tests Reported to CDC by U.S. Clinical Laboratories, National Summary, September 27, 2020 – March 27, 2021



Source: Centers for Disease Control and Prevention (CDC)



Proportion of Positive Influenza A Specimens for U.S. Army 2020-2021



*2014/2015 influenza season - 2019/2020 influenza season